



REFERENCES

DRAWINGS TO BE READ IN CONJUNCTION WITH BUT NOT LIMITED TO ALL STRUCTURAL ENGINEERS, STORMWATER ENGINEERS, LANDSCAPE ARCHITECTS, AND OTHER ASSOCIATED PLANS & REPORTS

REFER TO THE BASIX REPORT FOR ADDITIONAL REQUIREMENTS TO THE ONES NOTED ON THE DRAWINGS.

NOTES

ALL DIMENSIONS AND SETOUTS ARE TO BE VERIFIED ON SITE AND ALL OMISSIONS OR ANY DISCREPANCIES TO BE NOTIFIED TO THE ARCHITECT.

FIGURED DIMENSIONS TO BE USED AT ALL TIME.

DO NOT SCALE MEASUREMENTS OFF DRAWINGS.

22-12-2016 DA Submission	
Rev.	Description
Scale	
m	
0	3 6 9 12
	1:300 at A3 1:150 at A1

Project Architect

**CDΔ**  
CDARCHITECTS

LEVEL 2, 60 PARK STREET  
SYDNEY NSW 2000  
P: 02 9267 2000  
W: www.cdarchitects.com.au

© Copyright

The copyright of this drawing together with any other documents prepared by charnie design (CD) remains the property of CD. CD grants licence for the use of this document for the purpose for which it is intended. The licence is not transferable without permission from CD.

Nominated Architect: Jacob Yammine 8395, ABN 79 097 830 754

Project  
**PROPOSED MIXED USE DEVELOPMENT**

218-220 Parramatta Road & 3-9 Smallwood Avenue,  
Homebush

Drawing Title  
**SITE PLAN**

DA SUBMISSION		
Job no.	Drawing no.	Rev.
J16379D	DA 002	A
Drawn by	Checked by	Date
PY	RJ	NOV 2016

DRAWINGS TO BE READ IN CONJUNCTION WITH BUT NOT LIMITED TO ALL STRUCTURAL ENGINEERS, STORMWATER ENGINEERS, LANDSCAPE ARCHITECTS, AND OTHER ASSOCIATED PLANS & REPORTS

## NOTES

## MATERIAL LEGEND

REV. C AMENDMENT  
- LVL 5 CORNER ROOF REVISED

Project Architect

LEVEL 2, 60 PARK STREET  
SYDNEY NSW 2000  
P: 02 9267 2000  
W: [www.cdarchitects.com.au](http://www.cdarchitects.com.au)

© Copyright

The copyright of this drawing together with any other documents prepared by chanine design (CD) remains the property of CD. CD grants licence for the use of this document for the purpose for which it is intended. The licence is not transferable without permission from CD.

Nominated Architect: Jacob Yammine 8395, ABN 79 097 830 754

Project  
PROPOSED MIXED USE DEVELOPMENT

218-220 Parramatta Road & 3-9 Smallwood Avenue,  
Homebush

Drawing Title  
**NORTH EAST  
ELEVATION**

Job no.	Drawing no.	Rev.
J16379D	DA 200	C
<hr/>		
Drawn by	Checked by	Date
PY	RJ	NOV 2016



1 : 200

OUTLINE OF PROPOSED  
222-238 PARRAMATTA ROAD  
WAREHOUSE BUILDING  
DA2016/106

CD ARCHITECTS

LEVEL 2, 60 PARK STREET  
SYDNEY NSW 2000  
P: 02 9267 2000  
W: [www.cdarchitects.com.au](http://www.cdarchitects.com.au)

© Copyright

The copyright of this drawing together with any other documents prepared by chanine design (CD) remains the property of CD. CD grants licence for the use of this document for the purpose for which it is intended. The licence is not transferable without permission from CD.

Nominated Architect: Jacob Yammine 8395, ABN 79 097 830 754

Project  
PROPOSED MIXED USE DEVELOPMENT

218-220 Parramatta Road & 3-9 Smallwood Avenue,  
Homebush

Drawing Title  
**NORTH EAST  
ELEVATION**

Job no.	Drawing no.	Rev.
J16379D	DA 200	C
<hr/>		
Drawn by	Checked by	Date
PY	RJ	NOV 2016





E1 EAST SOUTH ELEVATION-SMALLWOOD AVENUE ELEVATION  
1 : 200

REFERENCES

DRAWINGS TO BE READ IN CONJUNCTION WITH BUT NOT LIMITED TO ALL STRUCTURAL ENGINEERS, STORMWATER ENGINEERS, LANDSCAPE ARCHITECTS, AND OTHER ASSOCIATED PLANS & REPORTS

REFER TO THE BASIS REPORT FOR ADDITIONAL REQUIREMENTS TO THE ONES NOTED ON THE DRAWINGS.

NOTES

ALL DIMENSIONS AND SETOUTS ARE TO BE VERIFIED ON SITE AND ALL OMISSIONS OR ANY DISCREPANCIES TO BE NOTIFIED TO THE ARCHITECT.

FIGURED DIMENSIONS TO BE USED AT ALL TIME.  
DO NOT SCALE MEASUREMENTS OFF DRAWINGS.

- MATERIAL LEGEND
- AWD1 ALUMINIUM FRAME WINDOWS & DOORS 1 - CHACOAL
  - BB ASTRAL BOWRAL BLUE BRICK
  - CG CLEAR GLASS BALUSTRADE
  - MC1 METAL CLADDING ALPOLIC CHARCOAL OR SIMILAR
  - MC2 METAL CLADDING ALPOLIC PATTERN WALNUT OR SIMILAR
  - ML METAL LOURVES (DULUX SILVER PEARL KINETIC ) OR SIMILAR
  - RPF1 RENDERED PAINT FINISH - DULUX MONUMENT
  - RPF2 RENDERED PAINT FINISH - DULUX WHITE ON WHITE OR SIMILAR
  - RPF3 RENDERED PAINT FINISH - DULUX SNOWY MOUNTAIN HALF
  - SC LASER CUT SCREEN PANEL (DULUX GOLDEN TOUCH)

REV. B AMENDMENT  
- FACADE REVISED  
- MATERIAL LEGEND REVISED

B	28-02-2017 DA Submission	
A	22-12-2016 DA Submission	
Rev.	Date	Description
Scale	0	2 4 6 8
m	0	1:200 at A3 1:100 at A1

Project Architect

**CDΔ**  
CDARCHITECTS

LEVEL 2, 60 PARK STREET  
SYDNEY NSW 2000  
P: 02 9267 2000  
W: www.cdarchitects.com.au

© Copyright

The copyright of this drawing together with any other documents prepared by charnie design (CD) remains the property of CD. CD grants licence for the use of this document for the purpose for which it is intended. The licence is not transferable without permission from CD.

Nominated Architect: Jacob Yammine 8395, ABN 79 097 830 754

Project  
**PROPOSED MIXED USE DEVELOPMENT**

218-220 Parramatta Road & 3-9 Smallwood Avenue, Homebush

Drawing Title  
**EAST SOUTH ELEVATION**

DA SUBMISSION

Job no.	Drawing no.	Rev.
J16379D	DA 201	B
Drawn by	Checked by	Date
PY	RJ	NOV 2016



OUTLINE OF  
PROPOSED 222-238  
PARRAMATTA ROAD  
WAREHOUSE  
BUILDING  
DA2016/106

1 SOUTH WEST ELEVATION  
1:200

REFERENCES

DRAWINGS TO BE READ IN CONJUNCTION WITH BUT NOT LIMITED TO ALL STRUCTURAL ENGINEERS, STORMWATER ENGINEERS, LANDSCAPE ARCHITECTS, AND OTHER ASSOCIATED PLANS & REPORTS

REFER TO THE BASIS REPORT FOR ADDITIONAL REQUIREMENTS TO THE ONES NOTED ON THE DRAWINGS.

NOTES

ALL DIMENSIONS AND SETOUTS ARE TO BE VERIFIED ON SITE AND ALL OMISSIONS OR ANY DISCREPANCIES TO BE NOTIFIED TO THE ARCHITECT.

FIGURED DIMENSIONS TO BE USED AT ALL TIME.  
DO NOT SCALE MEASUREMENTS OFF DRAWINGS.

- MATERIAL LEGEND
- AWD1 ALUMINIUM FRAME WINDOWS & DOORS 1 - CHACOAL
  - BB ASTRAL BOWRAL BLUE BRICK
  - CG CLEAR GLASS BALUSTRADE
  - MC1 METAL CLADDING ALPOLIC CHARCOAL OR SIMILAR
  - MC2 METAL CLADDING ALPOLIC PATTERN WALNUT OR SIMILAR
  - ML METAL LOURVES (DULUX SILVER PEARL KINETIC) OR SIMILAR
  - RPF1 RENDERED PAINT FINISH - DULUX MONUMENT
  - RPF2 RENDERED PAINT FINISH - DULUX WHITE ON WHITE OR SIMILAR
  - RPF3 RENDERED PAINT FINISH - DULUX SNOWY MOUNTAIN HALF
  - SC LASER CUT SCREEN PANEL (DULUX GOLDEN TOUCH)

REV. B AMENDMENT  
- FACADE REVISED  
- MATERIAL LEGEND REVISED

B 28-02-2017 DA Submission  
A 22-12-2016 DA Submission

Rev.	Date	Description
B	28-02-2017	DA Submission
A	22-12-2016	DA Submission

Scale  
m 0 2 4 6 8  
1:200 at A3 1:100 at A1

SHADOW STUDY  
17.800  
CD ARCHITECTS

LEVEL 2, 60 PARK STREET  
SYDNEY NSW 2000  
P: 02 9267 2000  
W: www.cdarchitects.com.au

© Copyright

The copyright of this drawing together with any other documents prepared by charnie design (CD) remains the property of CD. CD grants licence for the use of this document for the purpose for which it is intended. The licence is not transferable without permission from CD.

Nominated Architect: Jacob Yamine 8395, ABN 79 097 830 754

Project  
PROPOSED MIXED USE DEVELOPMENT

218-220 Parramatta Road & 3-9 Smallwood Avenue,  
Homebush

Drawing Title  
SOUTH WEST  
ELEVATION

DA SUBMISSION		
Job no.	Drawing no.	Rev.
J16379D	DA 202	B
Drawn by	Checked by	Date
PY	RJ	NOV 2016



REFERENCES

DRAWINGS TO BE READ IN CONJUNCTION WITH BUT NOT LIMITED TO ALL STRUCTURAL ENGINEERS, STORMWATER ENGINEERS, LANDSCAPE ARCHITECTS, AND OTHER ASSOCIATED PLANS & REPORTS

REFER TO THE BASIX REPORT FOR ADDITIONAL REQUIREMENTS TO THE ONES NOTED ON THE DRAWINGS.

NOTES

ALL DIMENSIONS AND SETOUTS ARE TO BE VERIFIED ON SITE AND ALL OMISSIONS OR ANY DISCREPANCIES TO BE NOTIFIED TO THE ARCHITECT.

FIGURED DIMENSIONS TO BE USED AT ALL TIME.

DO NOT SCALE MEASUREMENTS OFF DRAWINGS.

MATERIAL LEGEND

- AWD1

ALUMINIUM FRAME WINDOWS & DOORS 1 - CHACOAL
- BB

ASTRAL BOWRAL BLUE BRICK
- CG

CLEAR GLASS BALUSTRADE
- MC1

METAL CLADDING ALPOLIC CHARCOAL OR SIMILAR
- MC2

METAL CLADDING ALPOLIC PATTERN WALNUT OR SIMILAR
- ML

METAL LOURVES (DULUX SILVER PEARL KINETIC ) OR SIMILAR
- RPF1


RENDERED PAINT FINISH - DULUX MONUMENT
- RPF2

RENDERED PAINT FINISH - DULUX WHITE ON WHITE OR SIMILAR
- RPF3

RENDERED PAINT FINISH - DULUX SNOWY MOUNTAIN HALF
- SC

LASER CUT SCREEN PANEL (DULUX GOLDEN TOUCH)

REV. C AMENDMENT  
- FACADE REVISED

08-05-2017 DA Additional Information		
28-02-2017 DA Submission		
22-12-2016 DA Submission		
Rev.	Date	Description
		

Project Architect

CDΔ

CDARCHITECTS

LEVEL 2, 60 PARK STREET  
SYDNEY NSW 2000  
P: 02 9267 2000  
W: www.cdarchitects.com.au

© Copyright

The copyright of this drawing together with any other documents prepared by charnie design (CD) remains the property of CD. CD grants licence for the use of this document for the purpose for which it is intended. The licence is not transferable without permission from CD.

Nominated Architect: Jacob Yamine 8395, ABN 79 097 830 754

Project

PROPOSED MIXED USE DEVELOPMENT

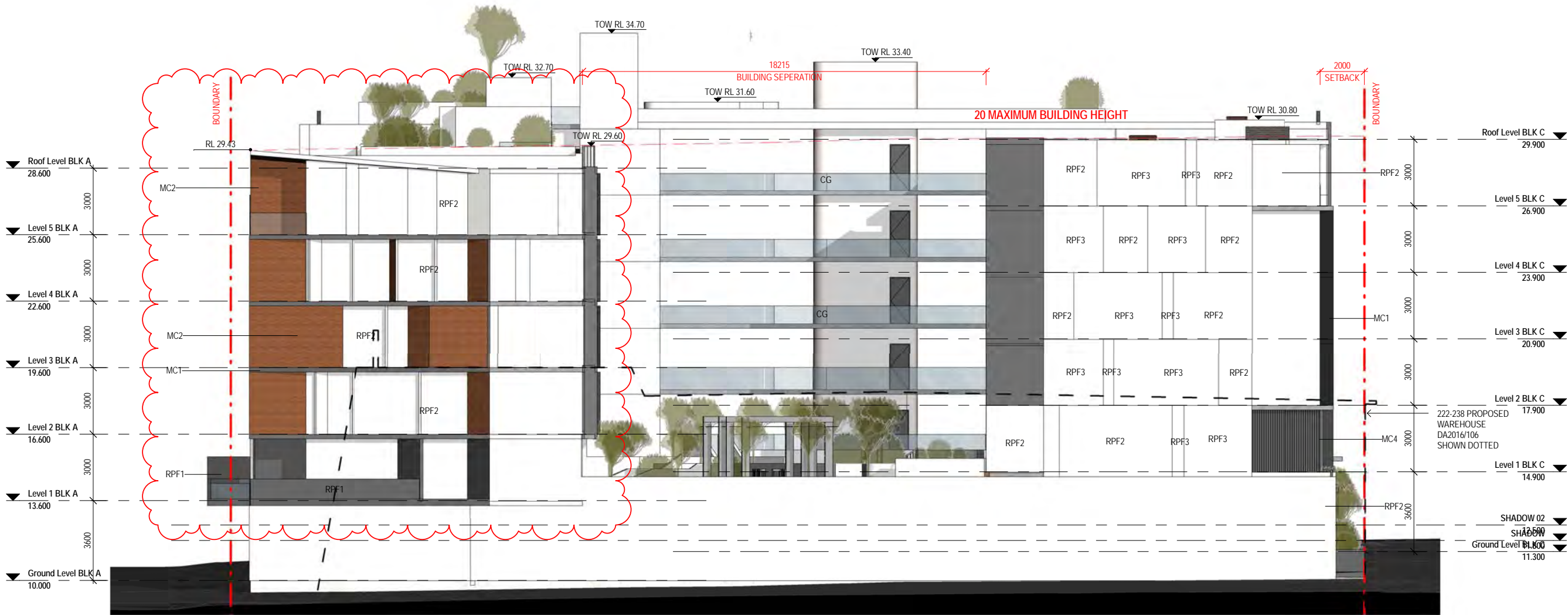
218-220 Parramatta Road & 3-9 Smallwood Avenue,  
Homebush

Drawing Title

WEST  
ELEVATION

DA SUBMISSION

Job no.	Drawing no.	Rev.
J16379D	DA 203	C
Drawn by	Checked by	Date
PY	RJ	NOV 2016



1 WEST ELEVATION  
1 : 200



REFERENCES

DRAWINGS TO BE READ IN CONJUNCTION WITH BUT NOT LIMITED TO ALL STRUCTURAL ENGINEERS, STORMWATER ENGINEERS, LANDSCAPE ARCHITECTS, AND OTHER ASSOCIATED PLANS & REPORTS

REFER TO THE BASIS REPORT FOR ADDITIONAL REQUIREMENTS TO THE ONES NOTED ON THE DRAWINGS.

NOTES

ALL DIMENSIONS AND SETOUTS ARE TO BE VERIFIED ON SITE AND ALL OMISSIONS OR ANY DISCREPANCIES TO BE NOTIFIED TO THE ARCHITECT.

FIGURED DIMENSIONS TO BE USED AT ALL TIME.

DO NOT SCALE MEASUREMENTS OFF DRAWINGS.

MATERIAL LEGEND

AWD1	ALUMINIUM FRAME WINDOWS & DOORS 1 - CHACOAL
BB	ASTRAL BOWRAL BLUE BRICK
CG	CLEAR GLASS BALUSTRADE
MC1	METAL CLADDING ALPOLIC CHARCOAL OR SIMILAR
MC2	METAL CLADDING ALPOLIC PATTERN WALNUT OR SIMILAR
ML	METAL LOURVES (DULUX SILVER PEARL KINETIC ) OR SIMILAR
RPF1	RENDERED PAINT FINISH - DULUX MONUMENT
RPF2	RENDERED PAINT FINISH - DULUX WHITE ON WHITE OR SIMILAR
RPF3	RENDERED PAINT FINISH - DULUX SNOWY MOUNTAIN HALF
SC	LASER CUT SCREEN PANEL (DULUX GOLDEN TOUCH)

REV.C AMENDMENT  
- ROOF PROFILE REVISED

C	08-05-2017	DA Additional Information
B	28-02-2017	DA Submission
A	22-12-2016	DA Submission
Rev.	Date	Description

Project Architect

**CDΔ**  
CDARCHITECTS

LEVEL 2, 60 PARK STREET  
SYDNEY NSW 2000  
P: 02 9267 2000  
W: www.cdarchitects.com.au

© Copyright

The copyright of this drawing together with any other documents prepared by charnie design (CD) remains the property of CD. CD grants licence for the use of this document for the purpose for which it is intended. The licence is not transferable without permission from CD.

Nominated Architect: Jacob Yamine 8395, ABN 79 097 830 754

Project  
**PROPOSED MIXED USE DEVELOPMENT**

218-220 Parramatta Road & 3-9 Smallwood Avenue,  
Homebush

Drawing Title  
**FINISHES SCHEDULE**

DA SUBMISSION

Job no.	Drawing no.	Rev.
J16379D	DA 730	C
Drawn by	Checked by	Date
PY	RJ	NOV 2016